



interprise suite™

Interprise Customer Feeds

Features

- Creation of customer specific feeds.
- If you have a customer that orders a lot, you can issue them with a URL and when they execute the URL it would give them stock code, description, their price, qty in stock of items that you would want to include in their feed.

If you are wanting to give your customers live updates on stock quantities, pricing, items and lead times – our customer feeds plug-in allows you to do exactly that.

Traditionally, when prompted by customers on your new prices/stock items/stock quantities/lead times – you would have to provide them with a spreadsheet. This would require you to export this information to then be sent to your customers.

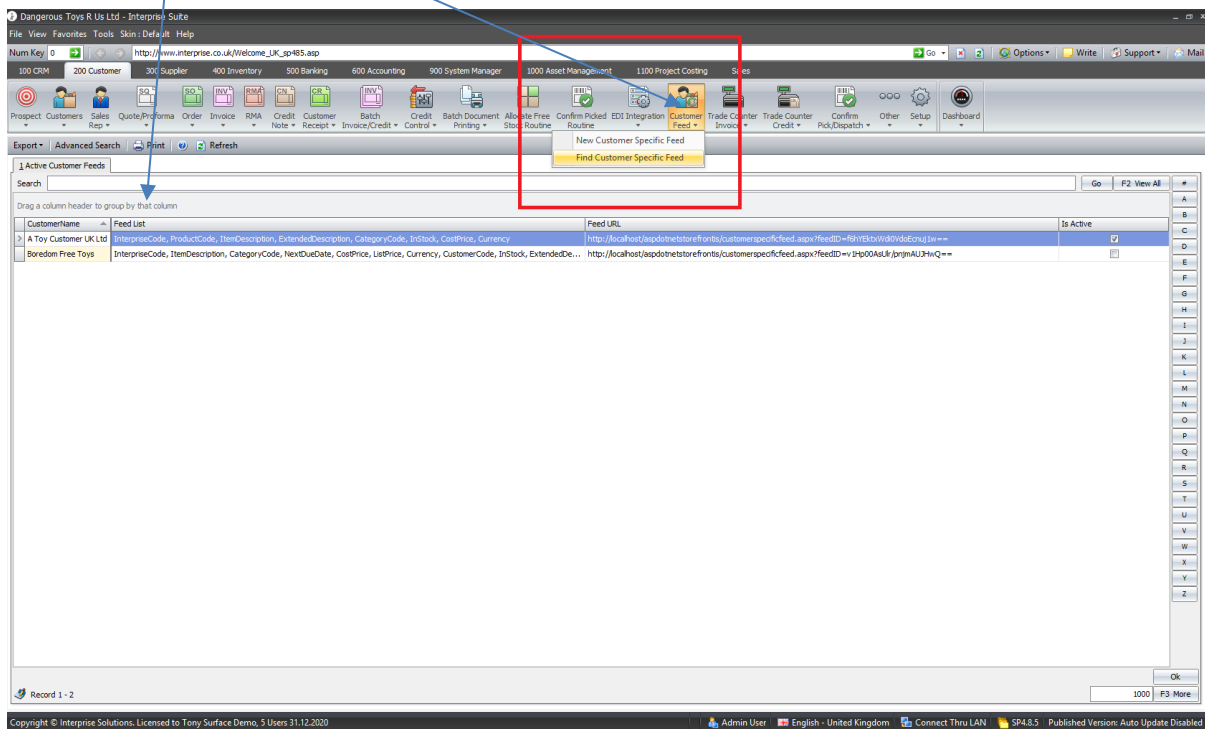
Our customer feeds plug-in automates the whole process. Simply provide your customer with a URL and they will be able to access all information regarding stock codes, quantities in stock, their pricing live. This eliminates the need for you or your team to manually send over excel spreadsheets with the information – saving you time and resource.

If you are interested in giving your customers live feeds, get in touch or email sales@apexit.co.uk

The Customer Feed plugin allows you to create specific customer feeds. So if you had a customer who ordered a lot from you then you could issue them with a url and when they executed the url it would give them the stock code, description, their price, Qty in stock etc. of items that you want to included in feeds.

This also allows us to create a customer called Googlebase as an example and then create a feed for googlebase on the same basis. This could also work for Pricegrabber or other people that use feeds. The advantage of this is that you can set a schedule in googlebase or pricegrabber etc to update the stock information. Its on demand. We can add a custom field on the stock item for "Show in Feed" and "GoogleBase Category" etc. This can also be used to update an external web shop if you have one with product information from Interprise.

This is the Find - Feed List Screen: New allows you to pick a new customer to create a feed for.



The Feed url is copied to the customer or to Googlebase to get the information. All the above are feeds we have created.



interprise suite™

The form below allows you to decide what fields actually will go into the feed: We can add in other custom fields easily.

The screenshot shows the 'Customer Specific Feed' configuration window. At the top, there is a toolbar with icons for New, Save and New, Save, Save and Close, Undo, Delete, Print, Refresh, Generate Feed URL, Copy URL, and Help. Below the toolbar, the 'Customer Name' is set to 'A Toy Customer UK Ltd' and 'Is Active' is checked. The 'Feed URL' is 'http://localhost/aspdotnetstorefronts/customer-specific-feed.aspx?feedID=fshYEktxWd0VdoEcnui1w=='. The main area is divided into two panes: 'Fields' and 'Sort Order'. The 'Fields' pane contains a list of fields: Column, NextDueDate, CustomerCode, and ListPrice. The 'Sort Order' pane contains a list of fields: Column, InterpriseCode, ProductCode, ItemDescription, ExtendedDescription, CategoryCode, InStock, CostPrice, and Currency. Navigation arrows are present between the panes.

The form below allows you for each feed to reduce the items down by category, department and main supplier. Otherwise they would get all items in the feed.

The screenshot shows the 'Customer Specific Feed' configuration window with the 'Criteria List' tab selected. It features three columns for filtering criteria: 'Supplier', 'Default Category', and 'Default Department'. Each column has an 'Include All' checkbox and a list of items with checkboxes. The 'Supplier' list includes 'Natalie', 'Super Sales Agent', 'sales Rep 1', 'A UK Supplier', 'A US Supplier', 'A French Supplier', 'Stationary Supplies', 'Gas Supplier', 'Electricity Supplier', 'The Toy Warehouse', 'Bits And Bobs', 'The Toys And Games Place', 'Young's Wholesale Company', 'Merchant Toys', 'The Ink Shop', 'Telephone and Internet Supplier', 'Extra Special Stationary', and 'Babs Cabs'. The 'Default Category' list includes 'Bikes', 'Bow & Arrows', 'Catapults', 'Computers', 'Dangerous Toys', 'Default', 'Ground2Air', 'Guns', 'Hand Gun', 'Machine Gun', 'Really Dangerous Toys', 'Rifle', 'Safe Toys', 'Shotgun', 'Sticks', and 'T-Shirts'. The 'Default Department' list includes 'Clothes', 'Default', 'Electrical', and 'Plastic'.