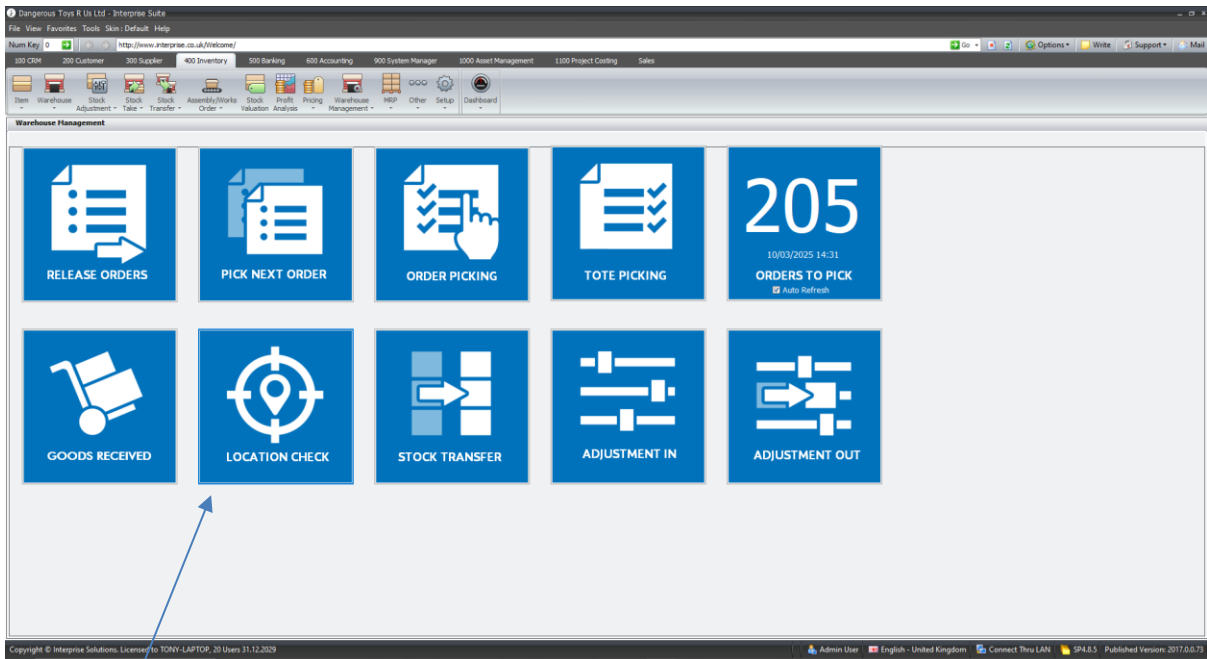


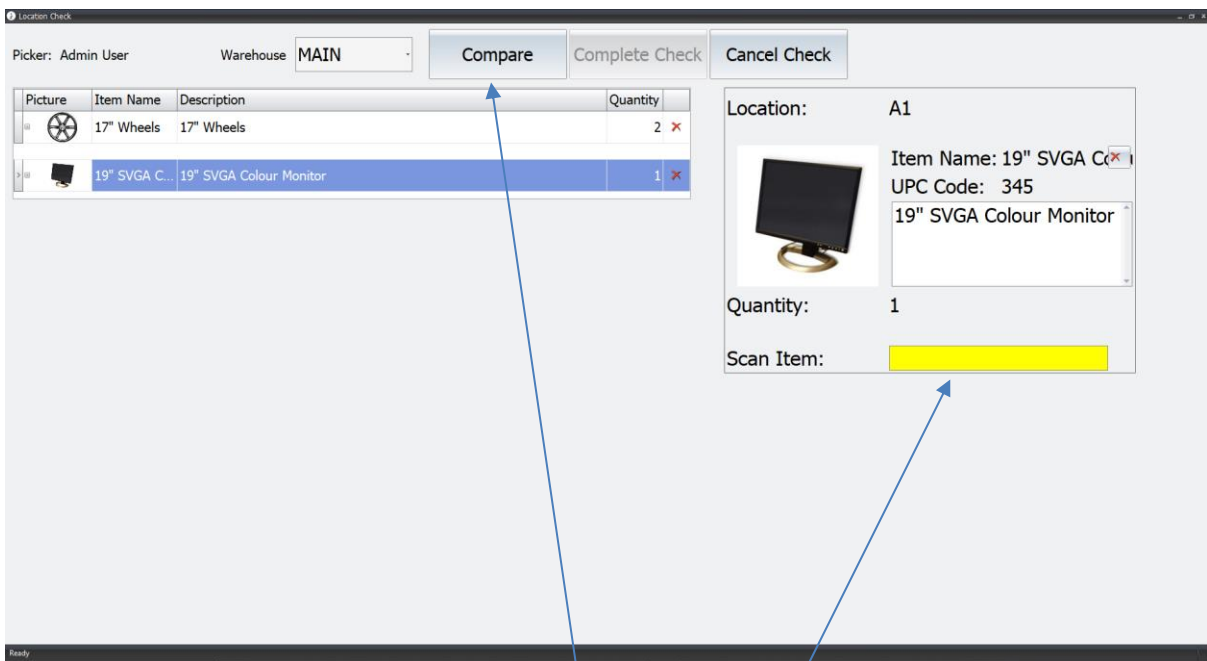


interprise suite™

WMS Warehouse Management Location Check / Location Stock Take



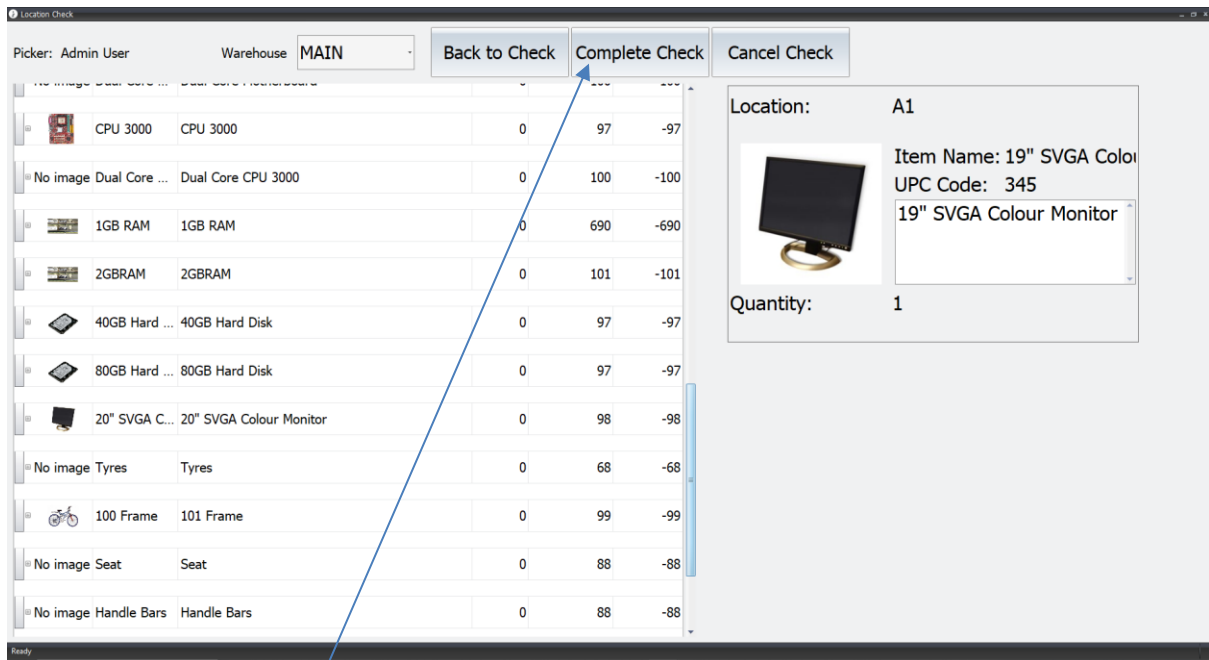
Location Check allows a user to scan all items in a location and then compare with what the system expects to be there and update the stock. This would allow for multiple users stock taking by location.



The user would pick or scan a location. Then they would scan all the items one after the other. When finished they would hit the Compare button. The user can remove item lines by clicking the X or scan 1 of an item and then enter the qty saving scanning them all. See below:



interprise suite™



The user can Cancel or Complete and this will post any necessary adjustments.

For a stock take we would expect a user to deallocate all sales orders and stop picking. Then multiple pickers can go around the warehouse at the same time to stock take and update the system by location.

You could do this periodically but you would need to stop picking or you could end up with having picked the goods and not confirm picked yet. Then a user stock takes the location and the stock just picked is not there now physically but it is from a system point of view.