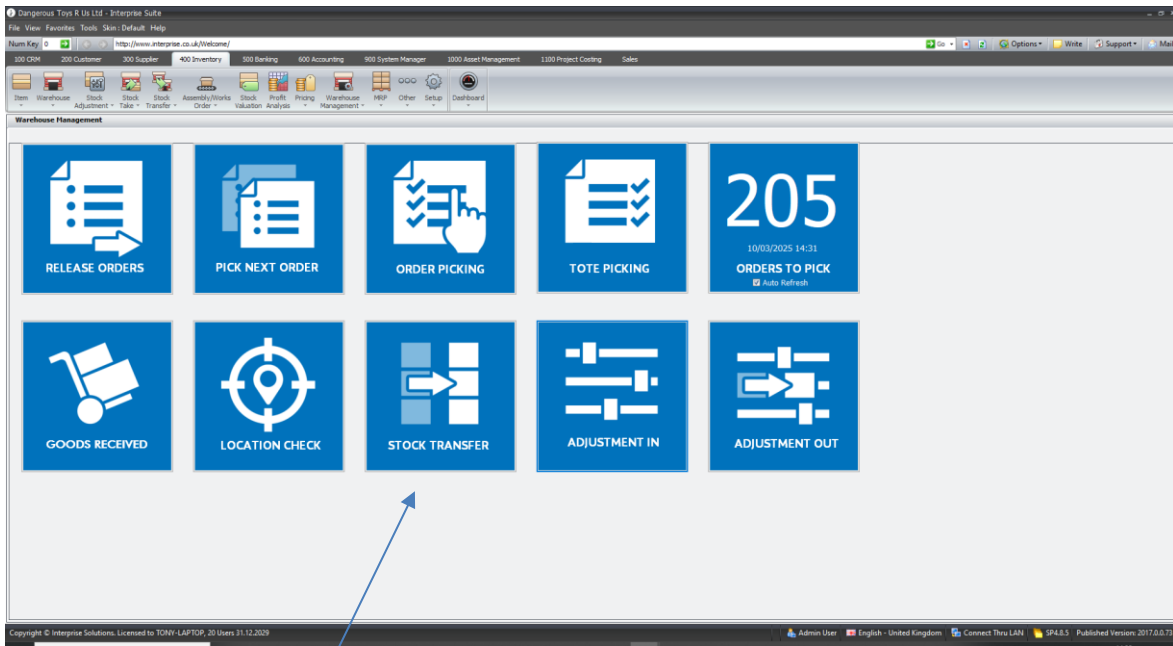




interprise suite™

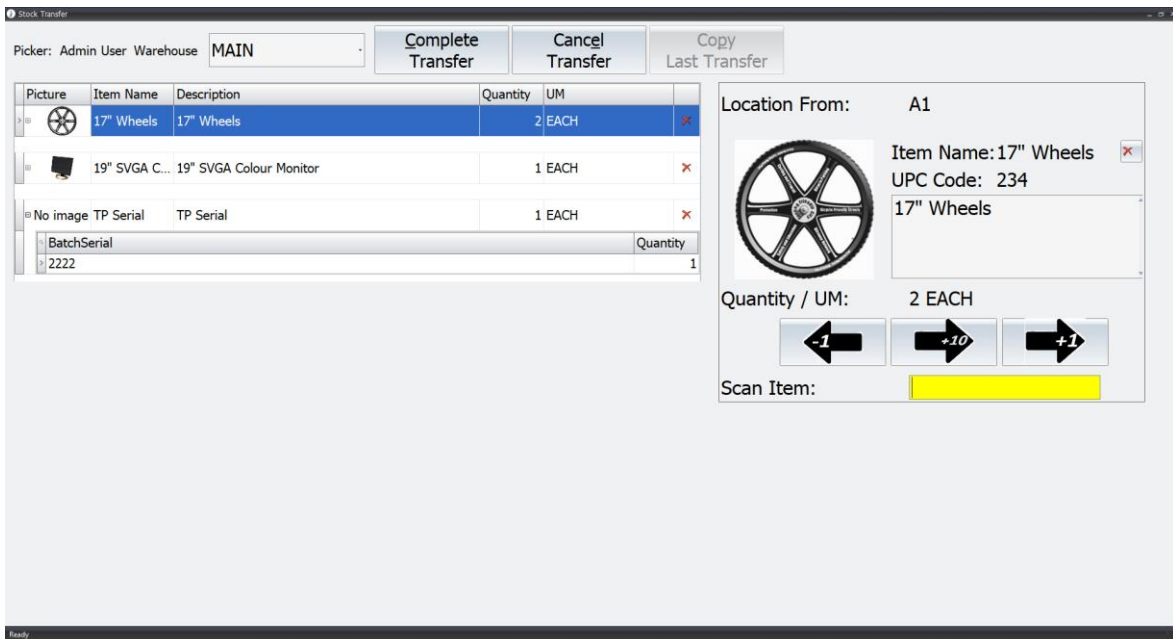
## WMS Warehouse Management Transfers



You can access stock transfer from the menu or the dashboard.

If a user has an assigned warehouse this will default in. All transfers would be from and to same warehouse. You could make up a location for each trolley with a bar code location on a trolley.

If you want to transfer or move items we can move them from the location they are in and put them onto the trolley location. (This helps / stop sales orders allocating stock that may be on the move so trolleys would be not normal stock locations). Then you decide to put them into a location it is just another transfer from the trolley to another location. A quick way to do this is to scan the trolley and then click Copy Last Transfer button to load up all the stock items.





interprise suite™

Or the user could scan the item location from, scan the items (put on trolley) and then move to another location and scan that location for all items to be put. So missing out the move to the trolley and then from trolley to other location.

So in summary : Scan the location we are taking stock from, scan items to move, then scan or pick location we are putting items. Done.