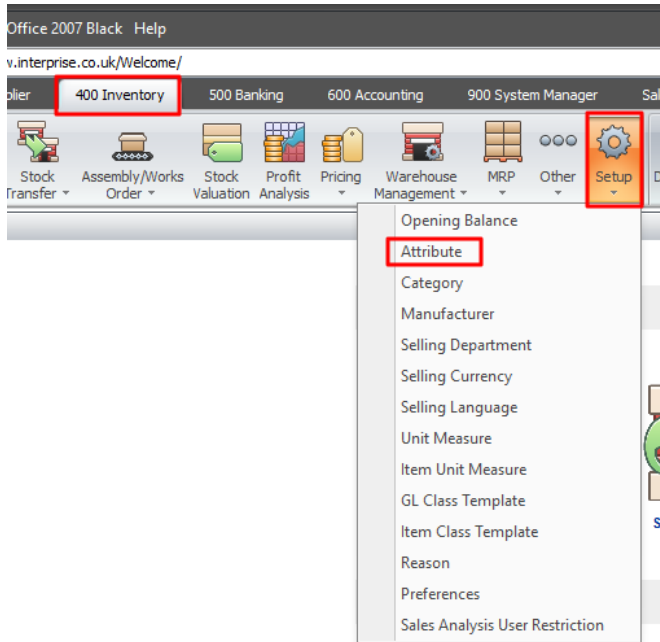




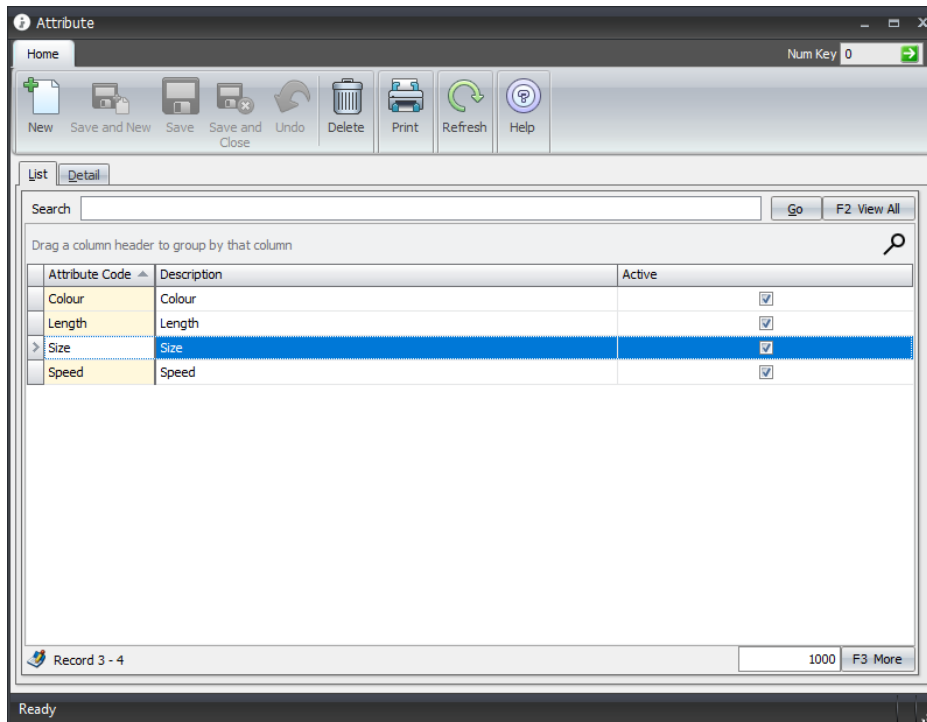
Matrix Items

Items that have multiple attributes, such as colour & size, can be created as Matrix Items within Interprise.

The Attributes must be created first - 400 Inventory > Setup > Attribute



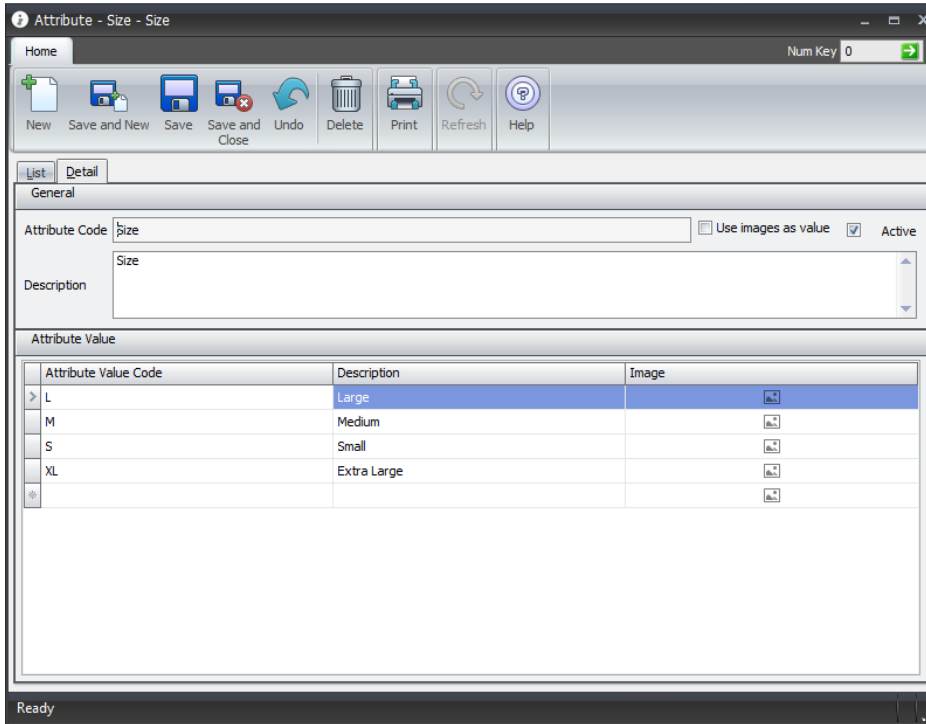
Click new & create the Attribute Code. Then populate the Attribute Value code, description & image if required. You can either click into the next blank line or use the tab key on your keyboard. Once complete 'Save & Close'





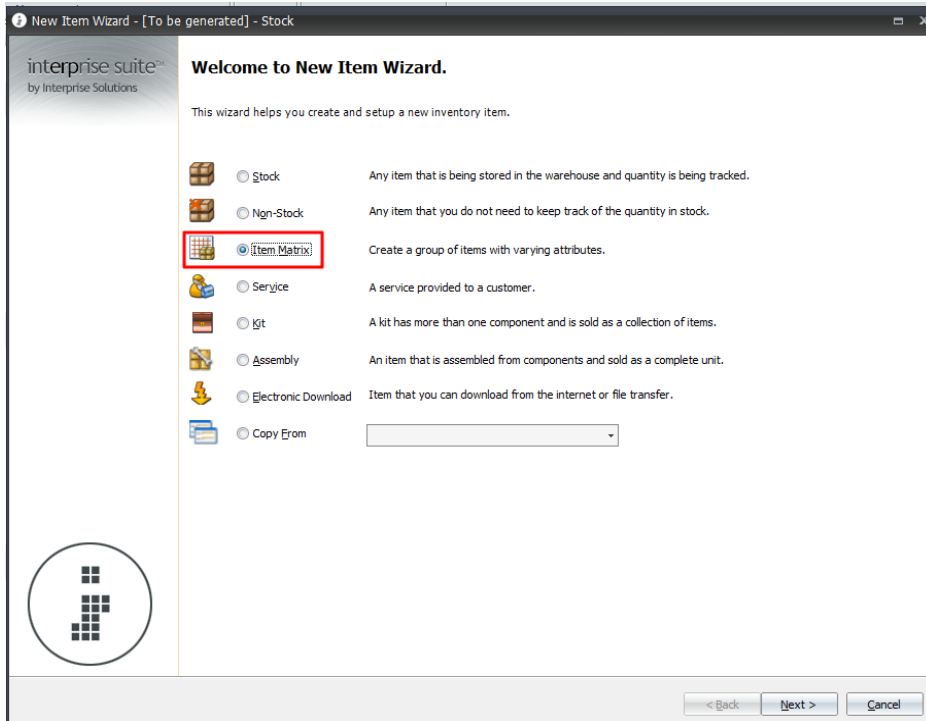
interprise suite™

Matrix Items



Once the attributes are created – the Matrix Item can be created using the New Item Wizard.

400 Inventory > Item > 401 New Item > Item Matrix



Create the item as normal



Matrix Items

New Item Wizard - Matrix Item - Matrix Group

General
Please enter the general information about the item.

Setup

Item Name: Matrix Item
Language Code: English - United Kingdom
Class Code: DEFAULT-MATRIX GROUP
Description: Example of a Matrix Item
Ext. Description:
Manufacturer:
Sales Tax Option: Customer
Sales Tax Code:
Commissionable: Yes
Comm Type: Sales Rep
Comm %:
Commodity:
Stock Take Days:

Photo

DOUBLE CLICK TO LOAD IMAGE

< Back Next > Cancel

New Item Wizard - Matrix Item - Matrix Group

Unit Measure and Category
Specify unit of measures, categories and departments of this item.

Unit Measure

UM	Weight	UM Qty.	Net Weight	Volume	UPCCode	SO Default	SO Show
Default UM							
EACH		1.00				<input checked="" type="checkbox"/>	<input checked="" type="checkbox"/>

Category

Default Category
Cat Accessories

Department

Default Department
CAT

< Back Next > Cancel

Then set up the Matrix



Matrix Items

New Item Wizard - Matrix Item - Matrix Group

Setup Matrix

Specify prefix and other details for the matrix group.

Please specify the prefix of the Matrix Item.

Prefix

Please specify a separator (optional)

It will separate the prefix and attributes in the generated Matrix Items.

Separator

Example

Include attribute name in description

< Back Next > Cancel

Select the relevant attribute codes from the list:

New Item Wizard - Matrix Item - Matrix Group

Attributes

Specify Attributes of a Matrix Group

Matrix Attributes

Attribute Code	AttributeDescription

Search

Go F2 View All

S...	Attribute Code	Description	Active
<input type="checkbox"/>	Colour	Colour	<input checked="" type="checkbox"/>
<input type="checkbox"/>	Length	Length	<input checked="" type="checkbox"/>
<input type="checkbox"/>	Size	Size	<input checked="" type="checkbox"/>
<input type="checkbox"/>	Speed	Speed	<input checked="" type="checkbox"/>

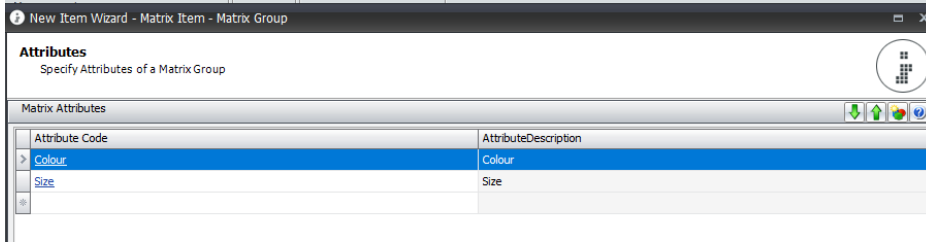
Select All Select None Ok Cancel

Record 1 - 4 1000 F3 More

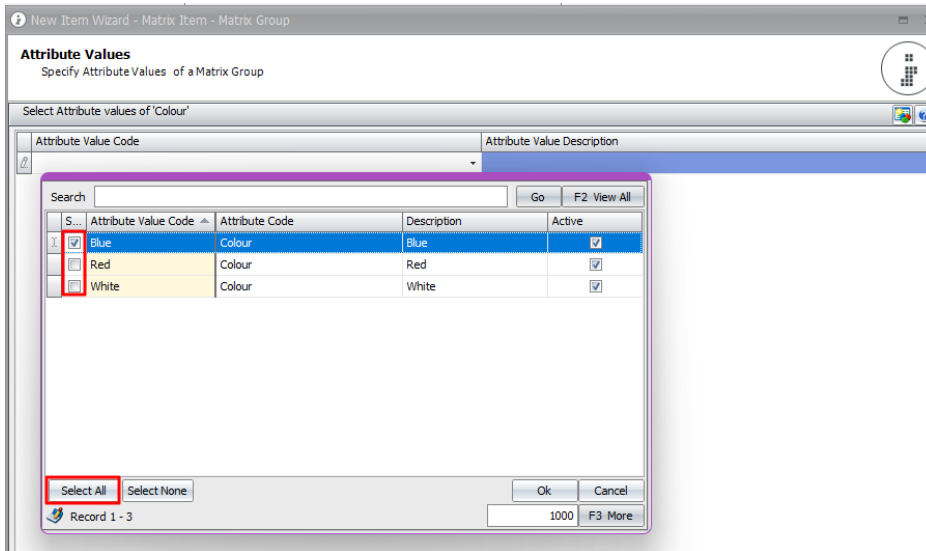
< Back Next > Cancel



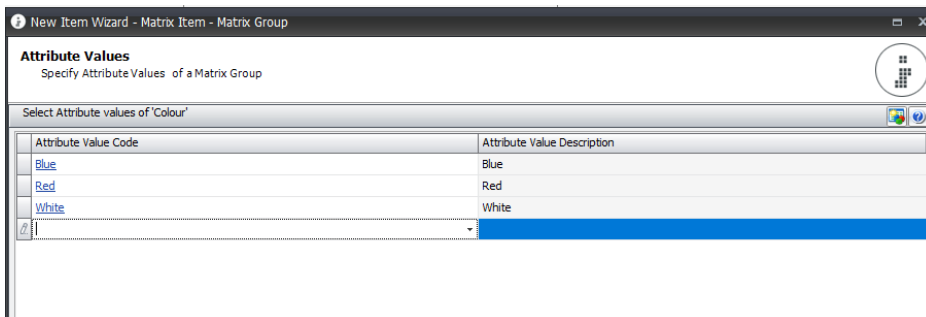
Matrix Items



Then select the relevant Attributes by ticking individuals or Click 'Select All':



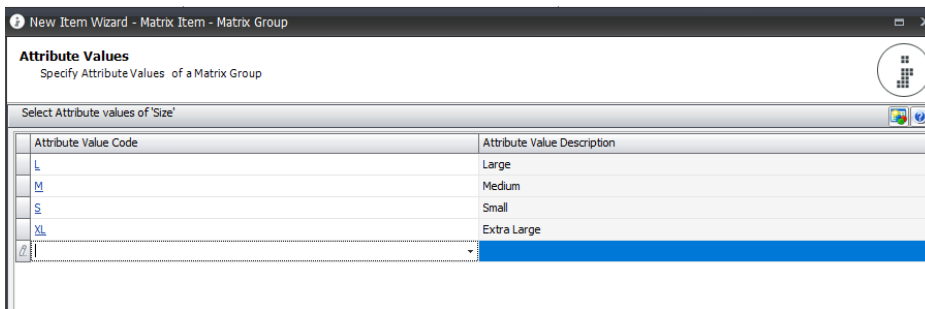
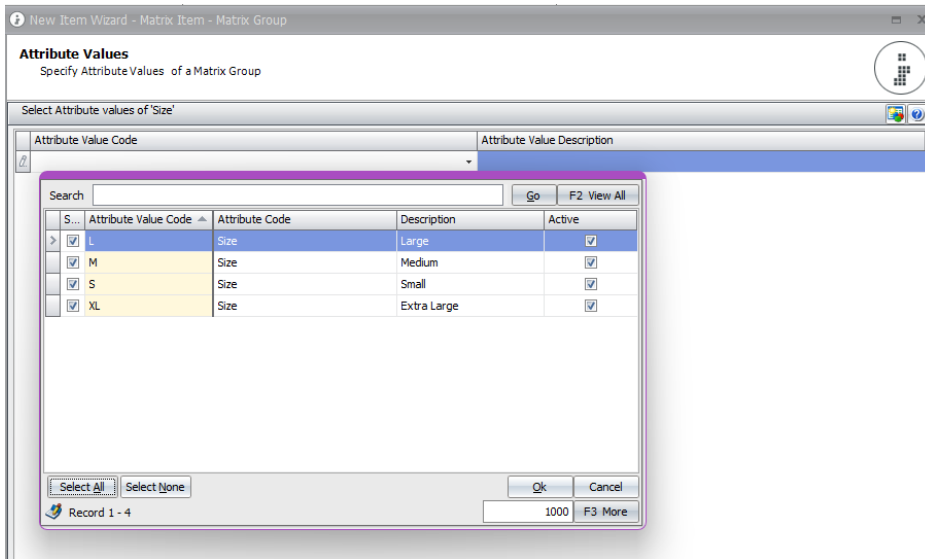
Clicking next will add these to the Matrix Item:



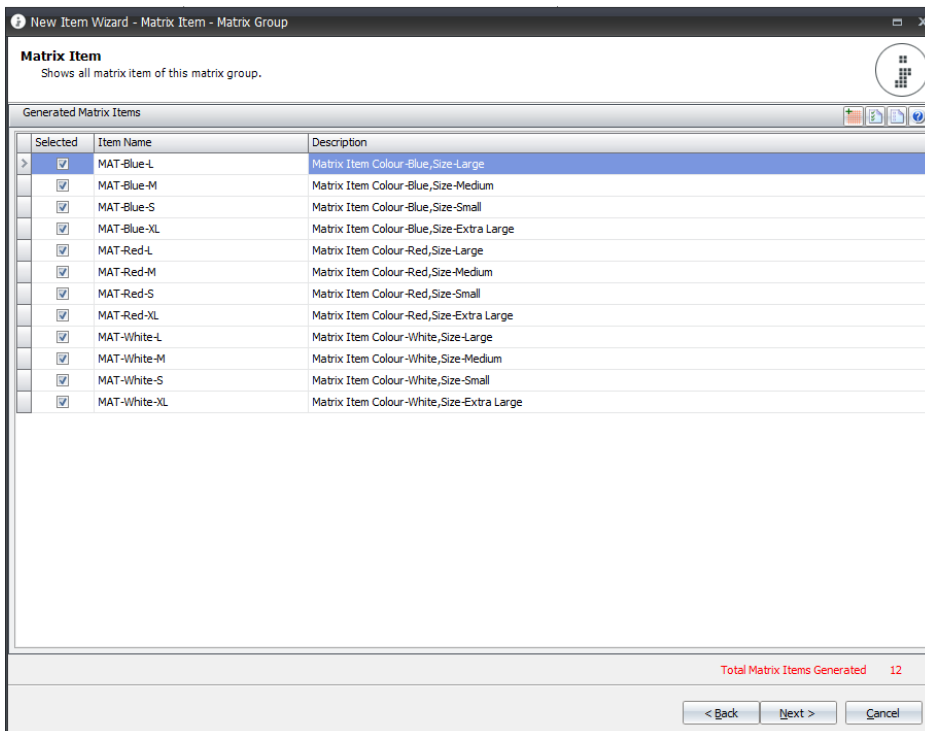


Matrix Items

Then select values for the second Attribute if applicable:



Click next – shows the items that will be created:





Matrix Items

Enter cost prices:

New Item Wizard - Matrix Item - Matrix Group

Costing
Specify costing information and suppliers of this item.

Costing Method: **Averag...** | Average Cost: £ 12.50 | Standard Cost: £ 12.50 | Last Cost: £ 12.50 | Rep Cost: £ 0.00

Supplier

Supplier Name	Priority	Supplier Cost Price	Base Cost Price
Burmese Ltd	<input checked="" type="checkbox"/>	£ 12.50	£ 12.50

Enter Selling Prices:

New Item Wizard - Matrix Item - Matrix Group

Pricing
Specify prices (or pricing) for home and foreign currencies.

Setup Pricing Apply home currency values to all currency

Pricing Method	Pricing Cost	Currency	Amount / %	Wholesale Price	Amount / %	Retail Price	Sug Retail Price
Currency Type : Home Currency							
None	£ 12.50	GBP		£ 22.00		£ 27.50	£ 0.00
Currency Type : Foreign Currency							
None	€ 15.63	EURO		€ 27.50		€ 34.38	€ 0.00
None	\$ 15.75	USD		\$ 27.72		\$ 34.65	\$ 0.00

Once complete the Matrix group will open:

Item - Matrix Item - Matrix Group - Example of a Matrix Item


Home | Num Key 0

General | Setup | Accounts | Costing | Pricing | Item Matrix | History | Transactions | Analysis | Batches | Notes | Documents | Non Stock Transactions | Component For | Competitors

Detail

Item Name: **Matrix Item** | Class Code: **DEFAULT-MATRIX GROUP** | Item Type: **Matrix Group** | Status: **Active** | Use By:

Description: **Example of a Matrix Item** | Ext. Description: **Example of a Matrix Item** | Notes: Traceable | Not Applicable

Item Photo | Stretch View |  **DOUBLE CLICK TO LOAD IMAGE**

Custom Field

OldCode:
 Supersession_C:
 Width:
 Depth:
 Numeric18_1_C:
 Numeric10_0_C:
 Numeric5_0_C:
 Number_C:
 SmallNumber_C:

Recent Transaction

Document Code	Transaction Date

Stock Information

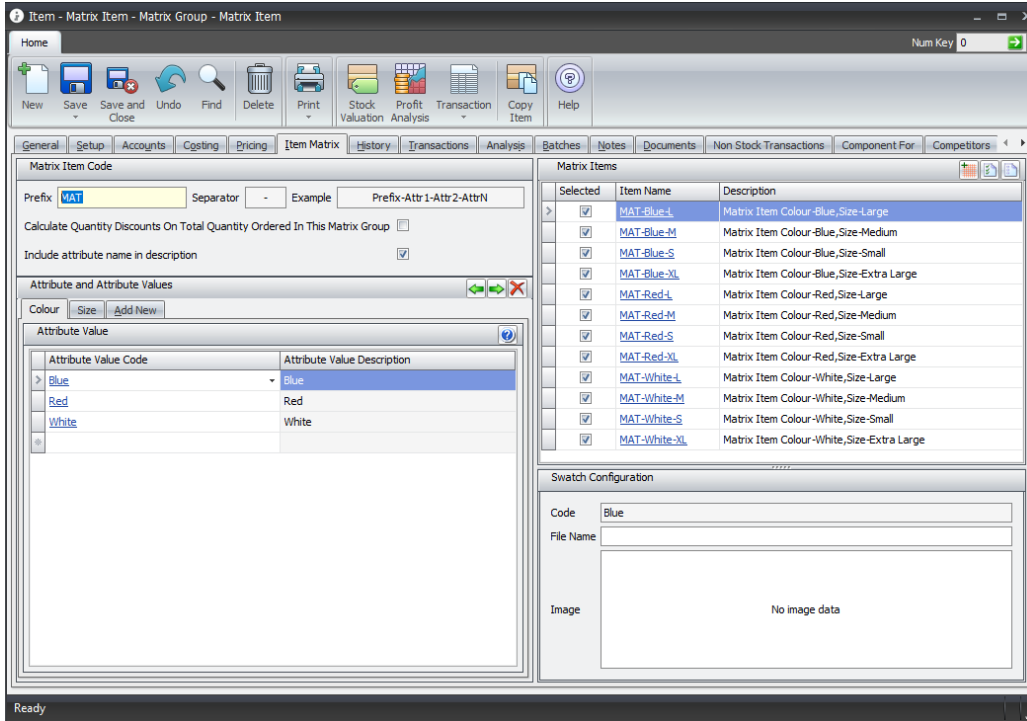
Warehouse Code	UM	In Stock	On SO	Allocated	Free Stock	Unallocated	On POrder	In Transit	Potential Stock	Other Location	Reorder Point

Ready



Matrix Items

Details of the matrix can be found in the 'Item Matrix' tab:



Save & Close to exit.

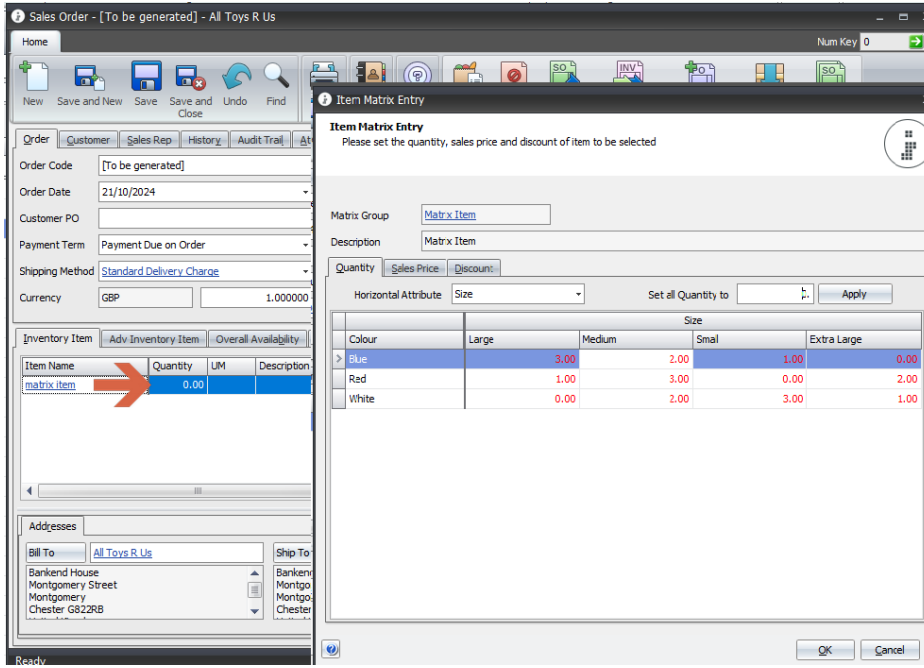


Matrix Items

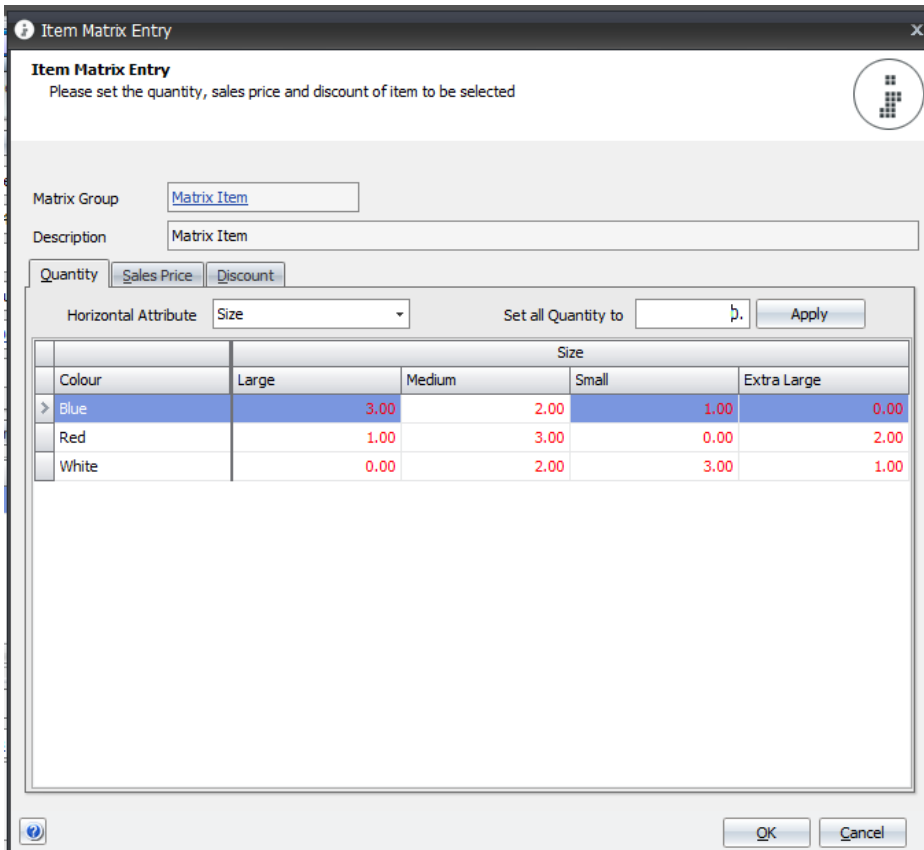
Adding Matrix Items to a Sales Order:

Matrix items can be added to sales orders individually OR as a Matrix.

Type the 'Matrix Group' name in full & press the right arrow key on the keyboard



This opens the 'Item Matrix Entry' form. Here the quantity, price & discounts can be entered & amended:





Matrix Items

Item Matrix Entry X

Item Matrix Entry
Please set the quantity, sales price and discount of item to be selected

Matrix Group:

Description:

Quantity | Sales Price | **Discount**

Horizontal Attribute: Set all Sales Price to:

	Size			
Colour	Large	Medium	Small	Extra Large
Blue	£ 22.00	£ 22.00	£ 22.00	£ 0.00
Red	£ 22.00	£ 22.00	£ 0.00	£ 22.00
White	£ 0.00	£ 22.00	£ 22.00	£ 22.00

Item Matrix Entry X

Item Matrix Entry
Please set the quantity, sales price and discount of item to be selected

Matrix Group:

Description:

Quantity | Sales Price | **Discount**

Horizontal Attribute: Set all Discount to:

	Size			
Colour	Large	Medium	Small	Extra Large
Blue	2.500%	2.500%	2.500%	2.500%
Red	2.500%	2.500%	2.500%	2.500%
White	2.500%	2.500%	2.500%	2.500%



interprise suite™

Matrix Items

Clicking OK will then add all the selected items to the Sales Order:

Sales Order - [To be generated] - All Toys R Us

Home

Num Key 0

New Save and New Save Save and Undo Find Print CRM Help Customer Detail Void Import Sales Quote Convert To Sales Invoice Create Purchase Order Create Drop Ship Order Duplicate Sales Order

Order Customer Sales Rep History Audit Trail Attachments Activities Back To Back Drop Ship SO History Payment 2 Order Template Analysis Import Order Square Up Payment Link Square Up Terminal Commercial Invoice Labels

Order Code [To be generated] Reference 2

Order Date 21/10/2024 Warehouse Main Warehouse

Customer PO Shipping Date 21/10/2024

Payment Term Payment Due on Order Source Internet

Shipping Method Standard Delivery Charge Coupon Code Allow BO

Currency GBP 1.00000 Contact Mrs A. McAulay

Custom Fields Notes Accounts Workflow Workflow 2 Picking

Carrier Tracking URL

Item Name	Quantity	LM	Description	Original	Warehouse Co.	COGS Acco.	Type	Drop	Tax Code	GL Account	Pricing	Discount	Coupon	Sales Price	Net Price	Ext Price
MAT-Blue-L	3.00	EACH	Matrix Item Colour-Blue,Size-Large	Main Warehouse	5800				UK 20 Std Rat	Sales Type A - UK	Admin User	2.500%	0.000	£ 22.00	£ 21.45	£ 64.35
MAT-Blue-M	2.00	EACH	Matrix Item Colour-Blue,Size-Medium	Main Warehouse	5800				UK 20 Std Rat	Sales Type A - UK	Admin User	2.500%	0.000	£ 22.00	£ 21.45	£ 42.90
MAT-Blue-S	1.00	EACH	Matrix Item Colour-Blue,Size-Small	Main Warehouse	5800				UK 20 Std Rat	Sales Type A - UK	Admin User	2.500%	0.000	£ 22.00	£ 21.45	£ 21.45
MAT-Red-L	1.00	EACH	Matrix Item Colour-Red,Size-Large	Main Warehouse	5800				UK 20 Std Rat	Sales Type A - UK	Admin User	2.500%	0.000	£ 22.00	£ 21.45	£ 21.45
MAT-Red-M	3.00	EACH	Matrix Item Colour-Red,Size-Medium	Main Warehouse	5800				UK 20 Std Rat	Sales Type A - UK	Admin User	2.500%	0.000	£ 22.00	£ 21.45	£ 64.35
MAT-Red-SL	2.00	EACH	Matrix Item Colour-Red,Size-Extra L...	Main Warehouse	5800				UK 20 Std Rat	Sales Type A - UK	Admin User	2.500%	0.000	£ 22.00	£ 21.45	£ 42.90
MAT-White-M	2.00	EACH	Matrix Item Colour-White,Size-Medium	Main Warehouse	5800				UK 20 Std Rat	Sales Type A - UK	Admin User	2.500%	0.000	£ 22.00	£ 21.45	£ 42.90
MAT-White-S	3.00	EACH	Matrix Item Colour-White,Size-Small	Main Warehouse	5800				UK 20 Std Rat	Sales Type A - UK	Admin User	2.500%	0.000	£ 22.00	£ 21.45	£ 64.35
MAT-White-SL	1.00	EACH	Matrix Item Colour-White,Size-Extra L...	Main Warehouse	5800				UK 20 Std Rat	Sales Type A - UK	Admin User	2.500%	0.000	£ 22.00	£ 21.45	£ 21.45
MAT-Blue-XL	1.00	EACH	Matrix Item Colour-Blue,Size-Extra L...	Main Warehouse	5800				UK 20 Std Rat	Sales Type A - UK	Wholesale	2.500%	0.000	£ 0.00	£ 0.00	£ 0.00
MAT-Red-S	1.00	EACH	Matrix Item Colour-Red,Size-Small	Main Warehouse	5800				UK 20 Std Rat	Sales Type A - UK	Wholesale	2.500%	0.000	£ 0.00	£ 0.00	£ 0.00
MAT-White-L	1.00	EACH	Matrix Item Colour-White,Size-Large	Main Warehouse	5800				UK 20 Std Rat	Sales Type A - UK	Wholesale	2.500%	0.000	£ 0.00	£ 0.00	£ 0.00